

Correction to Monolithically Integrated Micro- and Nanostructured Glass Surface with Antiglare, Antireflection, and Superhydrophobic Properties

Domenico Tulli, Shandon D. Hart, Prantik Mazumder, Albert Carrilero, Lili Tian, Karl W. Koch, Ruchirej Yongsunthon, Garrett A. Piech, and Valerio Pruneri*

ACS Appl. Mater. Interfaces 2014, 6 (14), 11198–11203. DOI: 10.1021/am5013062

P 11198 and 11201. The SEM image in the inset of Figure 5 (left picture) and consequently in the TOC is not that of the sample AG-8CuIV which Figure 5 refers to. A very similar SEM image was mistakenly included. The correct version of Figure 5 and its caption (unchanged), as well as the corrected TOC graphic are included here. The conclusions of the paper are not affected by this change.

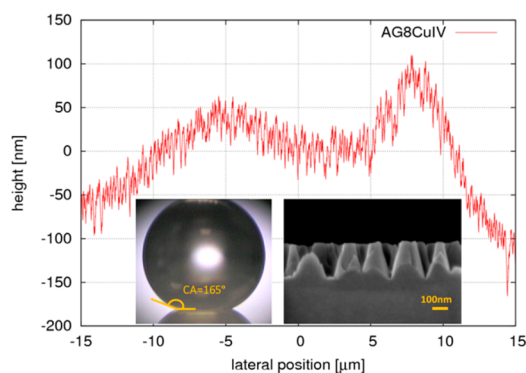


Table of Contents graphic

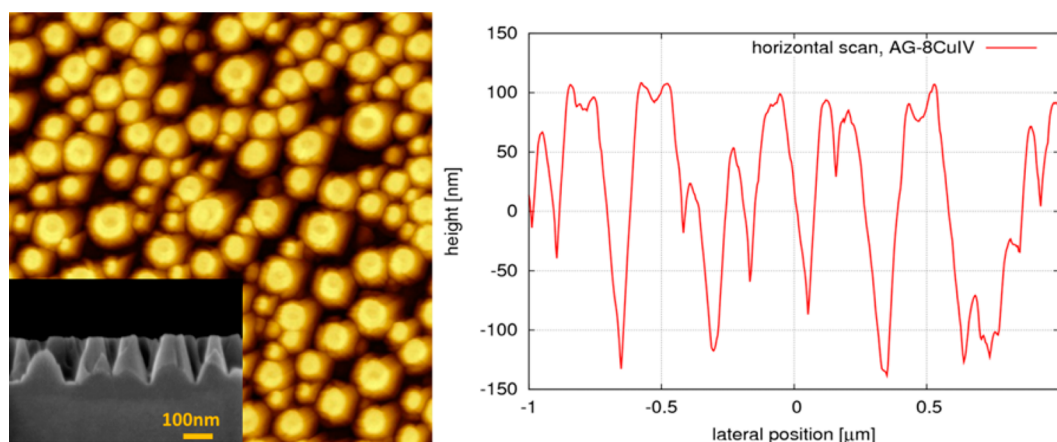


Figure 5. AFM height images and scan of the AG surfaces with the nanopillars obtained using RIE of the surface covered by dewetted metal nanoparticles: sample AG 8 Cu IV. The inset of the left figure is a SEM image of the cross section of the surface.

Published: April 30, 2015